

*University of Southern Indiana*  
Annual Operating Budget  
Fiscal Year 2024-2025

## CURRENT OPERATING BUDGET SUMMARY

	<u>Approved Budget 2023-24</u>	<u>Budget Change</u>	<u>Proposed Budget 2024-25</u>
<b>INCOME</b>			
State Appropriation - Operating	53,128,324	703,285	53,831,609
State Appropriation - Line Items	1,110,900	0	1,110,900
State Appropriation - Fee Replacement	12,321,600	(390)	12,321,210
Student Fees	49,549,297	577,368	50,126,665
Other Income	10,248,005	1,716,718	11,964,723
Fund Balance	920,000	0	920,000
<b>TOTAL</b>	<b>127,278,126</b>	<b>2,996,981</b>	<b>130,275,107</b>
<b>MAJOR EXPENSE CLASSIFICATION</b>			
Personal Services	86,129,576	2,367,092	88,496,668
Supplies and Expense	36,807,572	713,524	37,521,096
Repairs and Maintenance	2,290,351	7,070	2,297,421
Capital Outlay	2,050,627	(90,705)	1,959,922
<b>TOTAL</b>	<b>127,278,126</b>	<b>2,996,981</b>	<b>130,275,107</b>
<b>FUNCTIONAL EXPENDITURE CLASSIFICATION</b>			
Instruction	58,439,197	1,057,270	59,496,467
Academic Support	6,002,877	272,771	6,275,648
Student Services	12,580,048	696,441	13,276,489
Operation and Maintenance of Plant	16,728,472	359,518	17,087,990
Administration and General	19,063,888	824,146	19,888,034
Institutional Student Aid	14,463,644	(213,165)	14,250,479
<b>TOTAL</b>	<b>127,278,126</b>	<b>2,996,981</b>	<b>130,275,107</b>

# 2024-2025 State Appropriation

Operating Appropriation	\$53,831,609
Line Item Appropriation	
Dual Credit Enrollment	\$ 510,900
Early College Bridge Program	\$ 600,000
Fee Replacement Appropriation	\$12,321,210
Total State Appropriation	\$67,263,719

# 2024-2025 Total Income

Total State Appropriation	\$67,263,719
Student Fees	\$50,126,665
Other Income	\$11,964,723
Fund Balance	\$ 920,000
Total Income	\$130,275,107

# 2024-2025 Available New Funding

State Operating Appropriation	\$	703,285
Line Item Appropriation	\$	0
Fee Replacement Appropriation	\$	(390)
Student Fees	\$	577,368
Other Income	\$	1,716,718
Fund Balance	\$	0

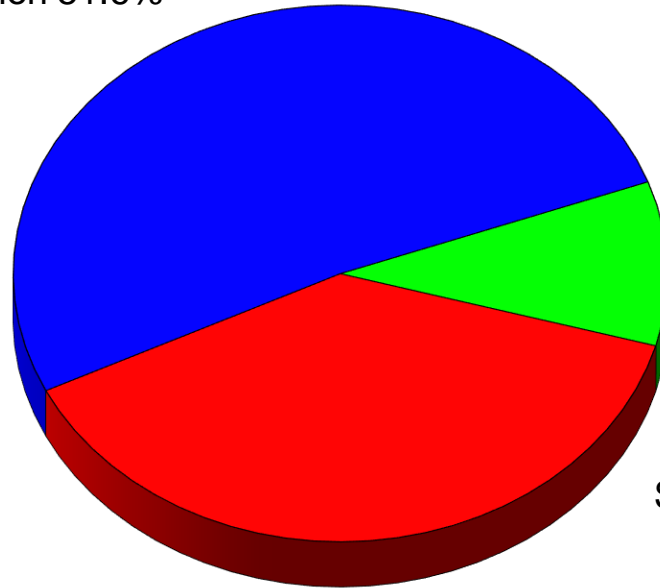
Total Available New Funding \$2,996,981

# Current Operating Budget

## Major Revenue Classification

### Fiscal Year 2024-2025

State Appropriation 51.6%



Other Income 9.9%

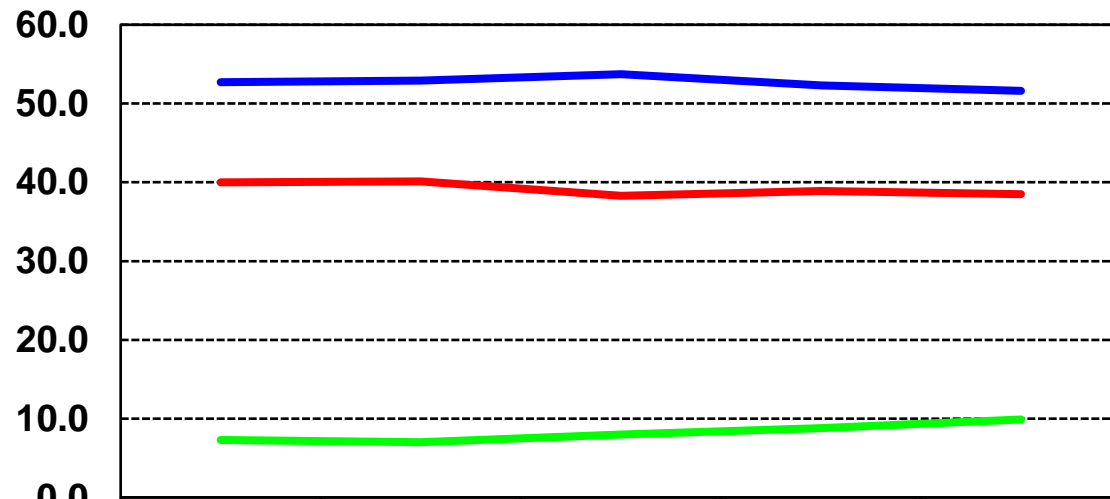
Student Fees 38.5%

# Current Operating Budget

## Major Revenue Classification

### Historical Comparison by Percentage

Percentage



	2021	2022	2023	2024	2025
<span style="color: green;">—</span> Other Income	7.3	7.0	8.0	8.8	9.9
<span style="color: red;">—</span> Student Fees	40.0	40.1	38.3	38.9	38.5
<span style="color: blue;">—</span> State Appropriation	52.7	52.9	53.7	52.3	51.6

# Uses of Funding

## Faculty and Staff Compensation Increases

- Salary increase (across the board and merit increase)
- Promotions
- Reclassifications
- Market adjustments
- Equity adjustments

## Other Funding Needs

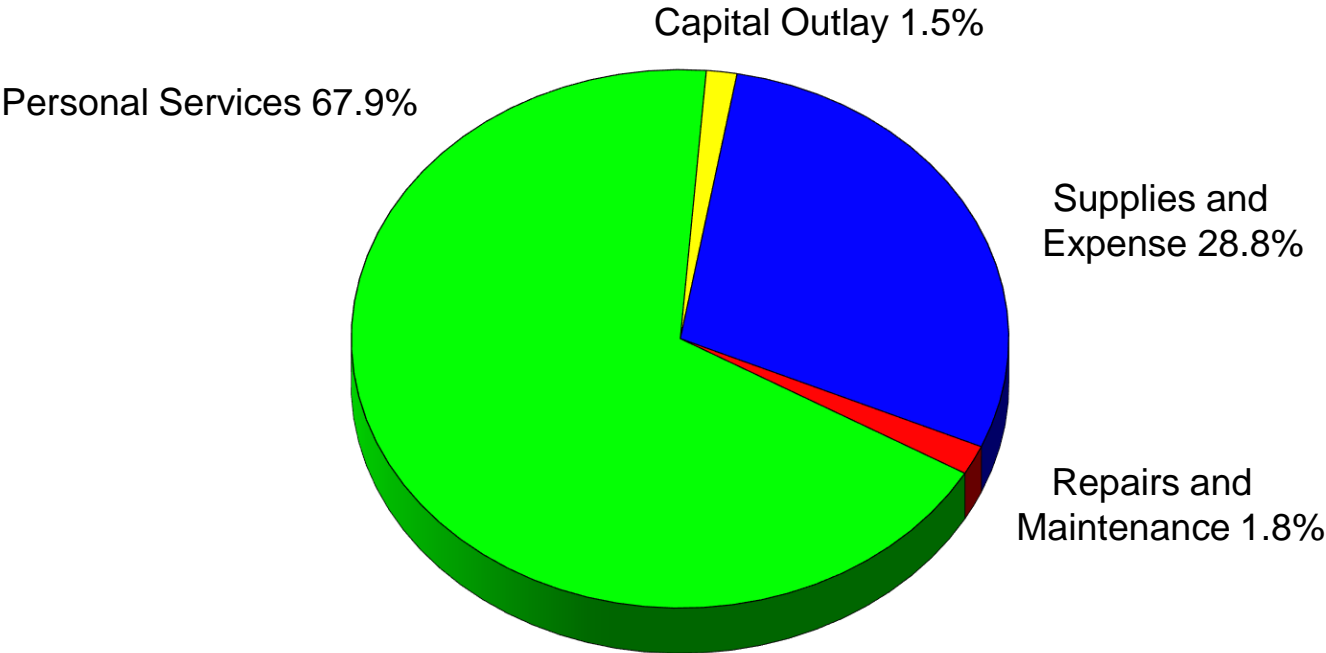
- Software Licenses, Property and Liability Insurance, Disability Resources Interpreter Services, Academic Program Support



# Current Operating Budget

## Major Expense Classification

### Fiscal Year 2024-2025

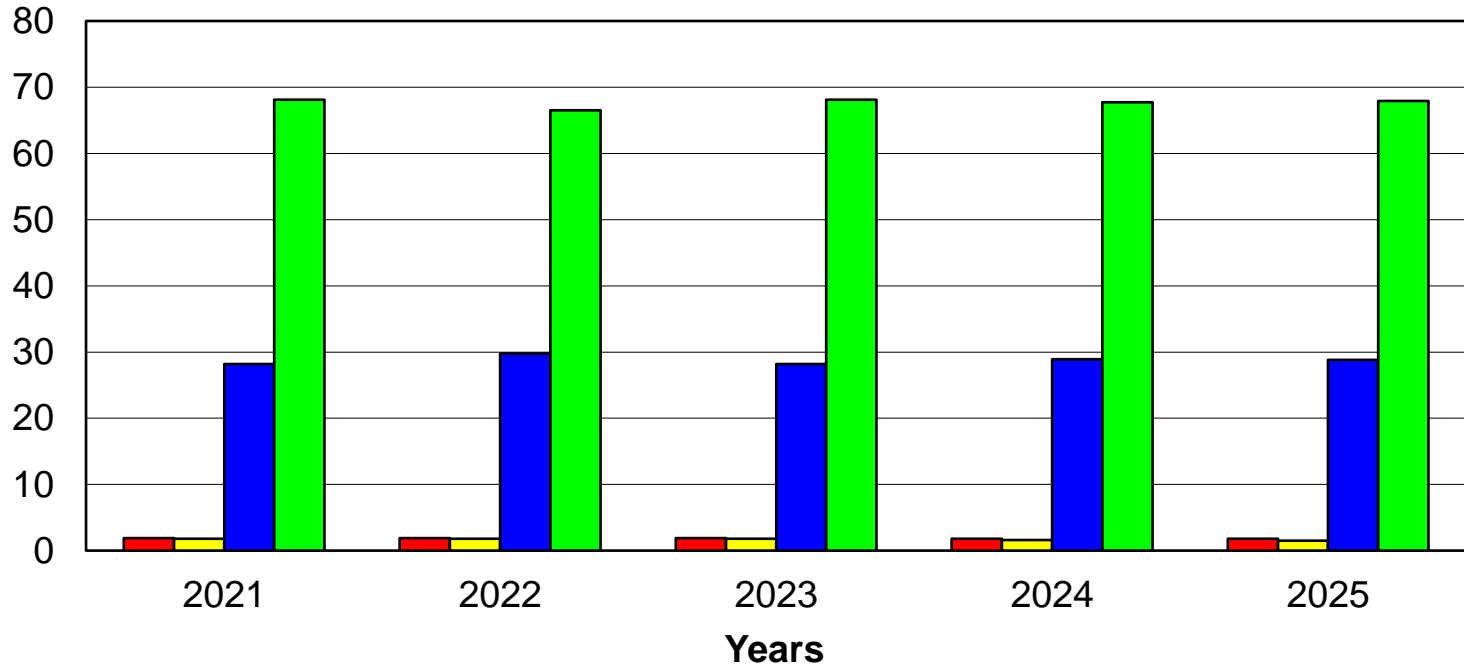


# Current Operating Budget

## Major Expense Classification

### Historical Comparison by Percentage

Percentage



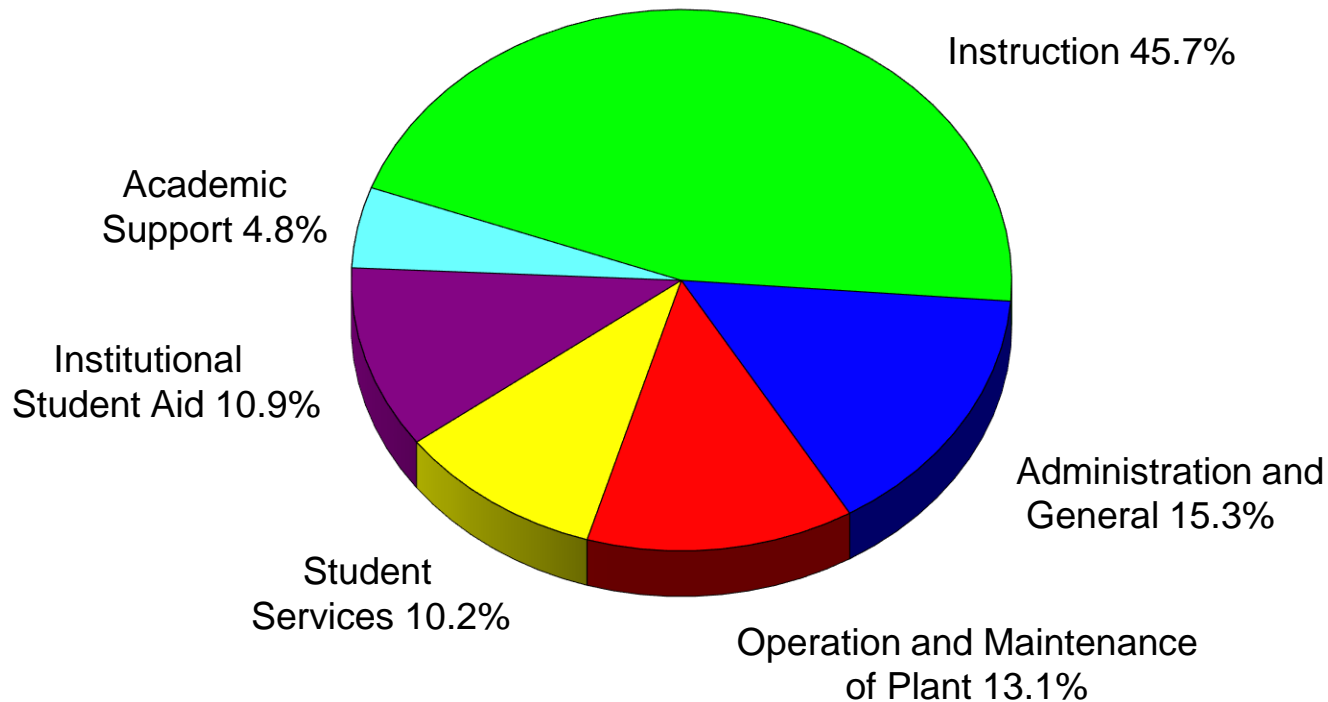
■ Repairs and Maintenance

■ Capital Outlay

■ Supplies and Expense

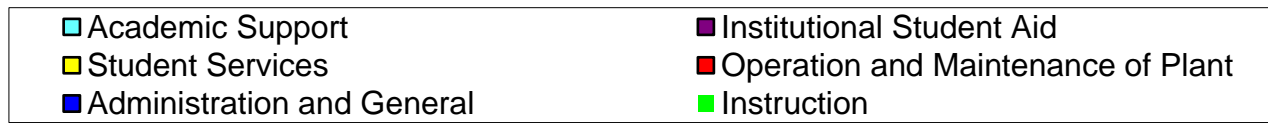
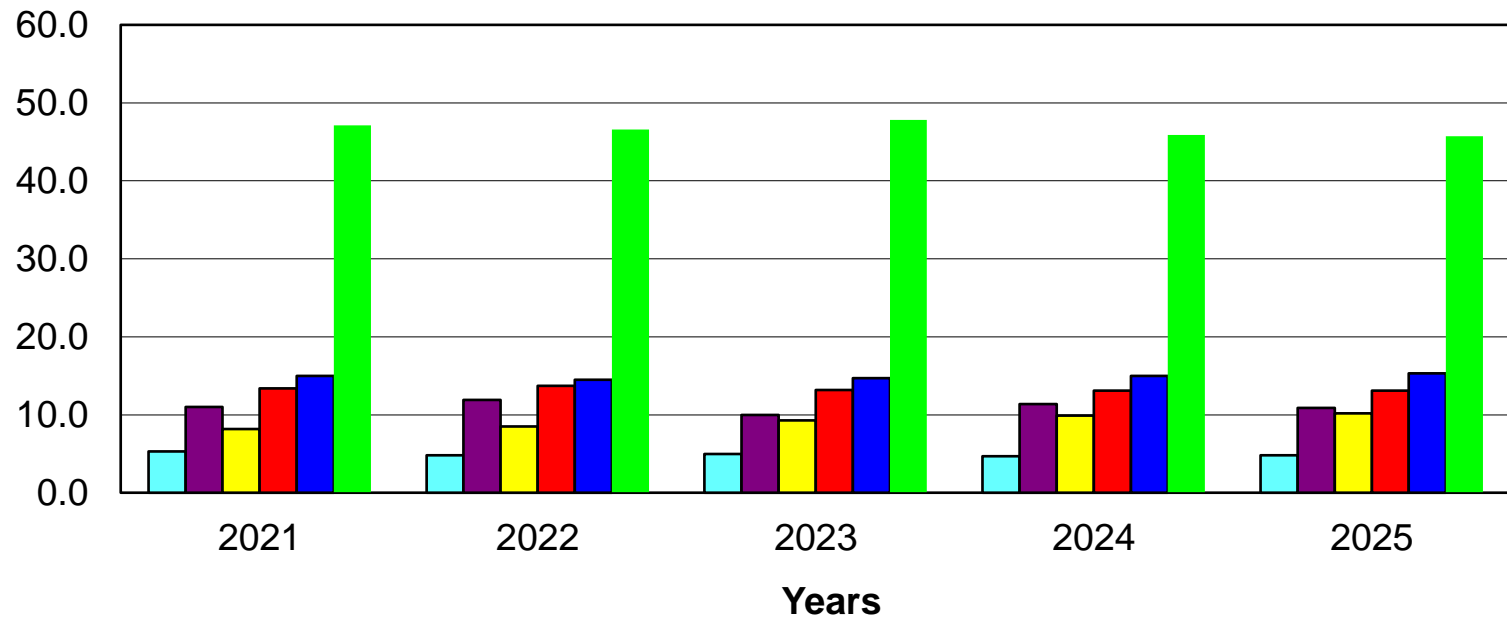
■ Personal Services

# Current Operating Budget Functional Expenditure Fiscal Year 2024-2025



# Current Operating Budget Functional Expenditure Historical Comparison by Percentage

Percentage



# Annual Operating Budget Increase

2023-2024

Annual Operating  
Budget

\$127,278,126

2024-2025

Annual Operating  
Budget

\$130,275,107

*University of Southern Indiana*  
Annual Operating Budget  
Fiscal Year 2024-2025